

## SPARTAN BAY



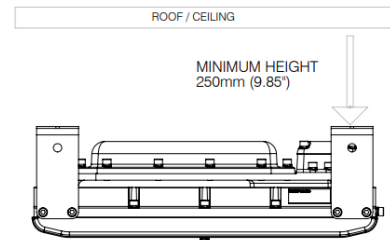
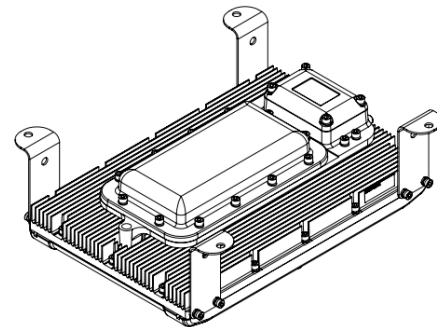
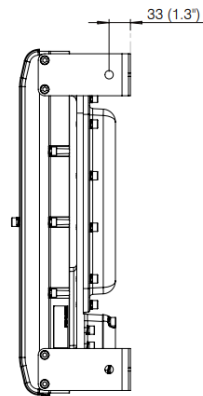
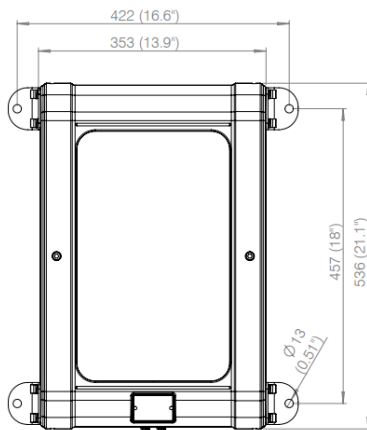
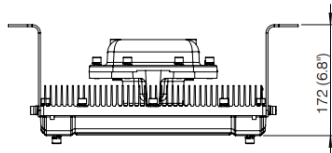
IP 66

IP 67



### TECHNICAL SPECIFICATIONS

<b>Certificate:</b>	CML 17ATEX1148
<b>Marking of explosion protection:</b>	II 2 G D Ex db eb mb op is IIB+H2 T4 Gb Ex db eb mb op is IIB T4 Gb Ex tb op is IIIC T140°C Db
<b>Temperature:</b>	-50°C ≤ Ta ≤ +50°C
<b>Voltage:</b>	150 - 264 V
<b>Frequency:</b>	50 - 60 Hz
<b>Material:</b>	Marine grade aluminium epoxy powder coated, toughened glass, all external fasteners and brackets are marine grade stainless steel
<b>Colour:</b>	Z 1: RAL 9006 Z 2: front RAL 7012, back 9006
<b>Beam:</b>	30° x 30° / 60° x 60° / 90° x 90° (circular)



Ref	Description	Power	LM	TC	Dimensions (mm)	Weight (Kg)	
HPBY25K	24 LEDs zone 1 gas & dust	300 W	23000	5000 K	550x353x164	22,70	
HPBY20K	24 LEDs zone 1 gas & dust	240 W	20000				
HPBY15K	24 LEDs zone 1 gas & dust	180 W	15000				
HPBY10K	12 LEDs zone 1 gas & dust	120 W	10000			21,00	
HPBY25K-2	24 LEDs zone 2 gas & dust	300 W	25000				
HPBY20K-2	24 LEDs zone 2 gas & dust	240 W	22000				22,70
HPBY15K-2	24 LEDs zone 2 gas & dust	180 W	16500				
HPBY10K-2	12 LEDs zone 2 gas & dust	120 W	11000				21,00